

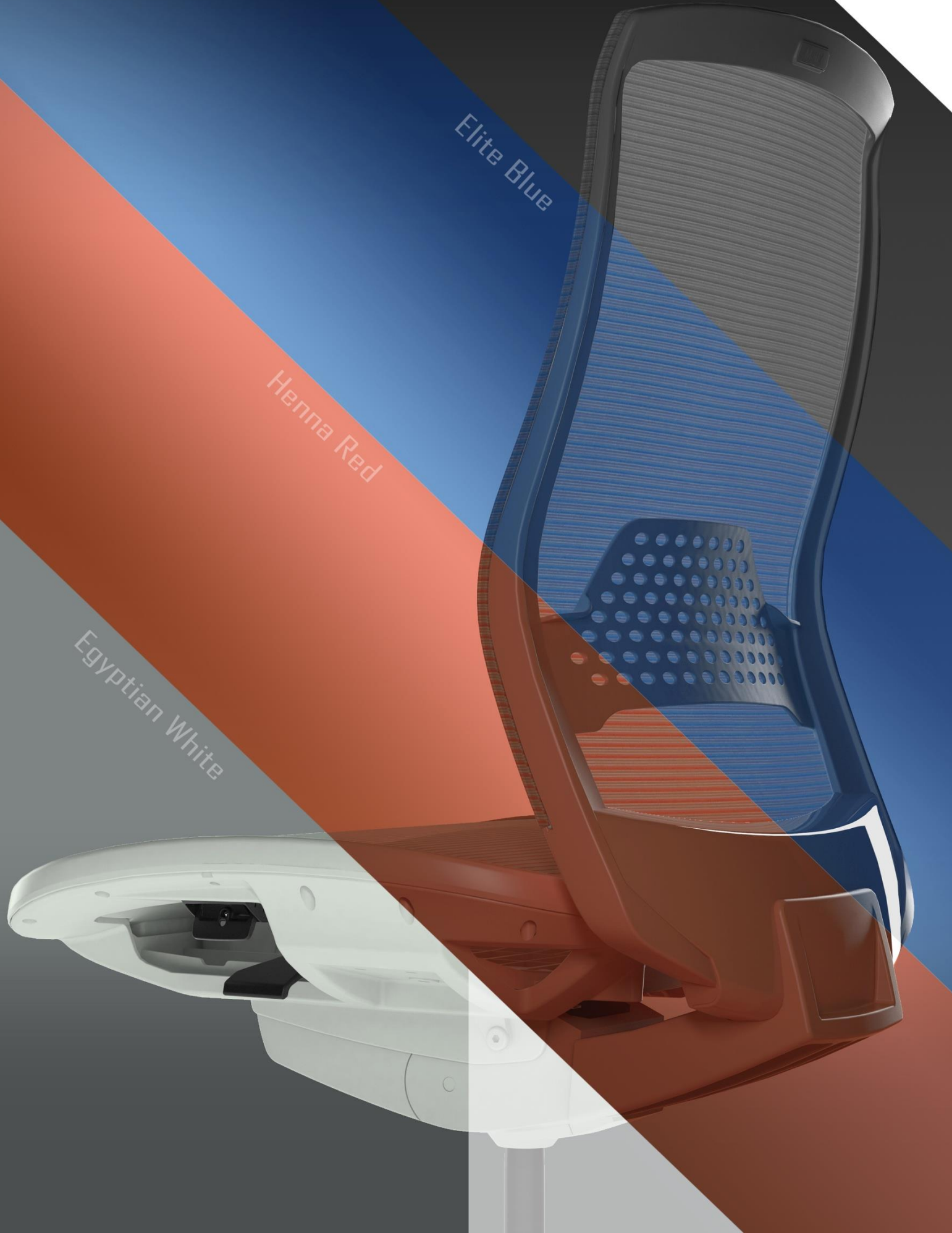
Metix Lite

JetBlack

Elite Blue

Henna Red

Egyptian White



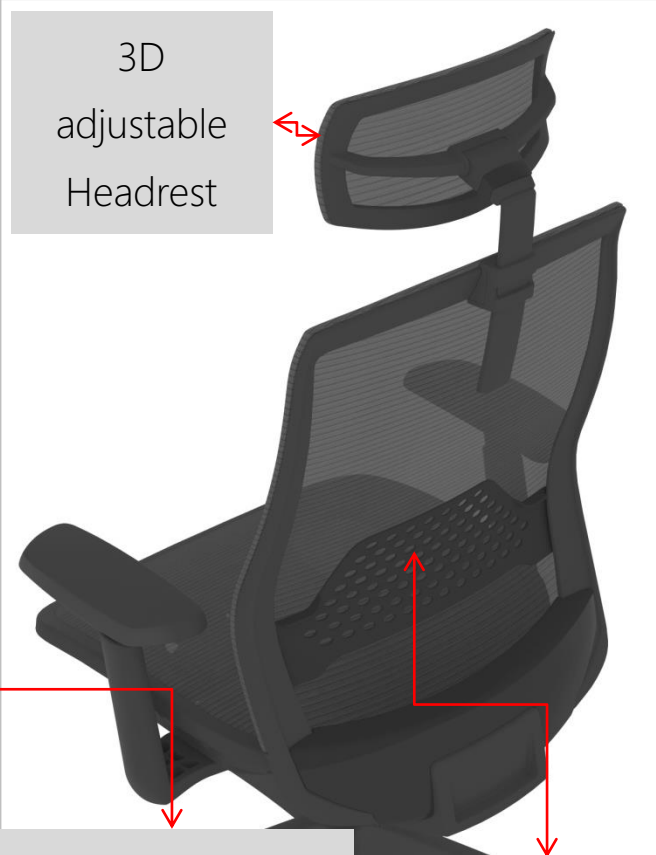
No nails
No plywood
No formaldehyde
No environment contamination
Inspired by the weightlessness
design
Monolithic design and
comfort=100%
- Metix Lite



Weightless beauty. Effortless support.

Experience the impossible lightness and effortless support of Metix-Lite task chair that integrates intuitive, responsive functionality with a clean-cut, refined aesthetic to complete any work setting.

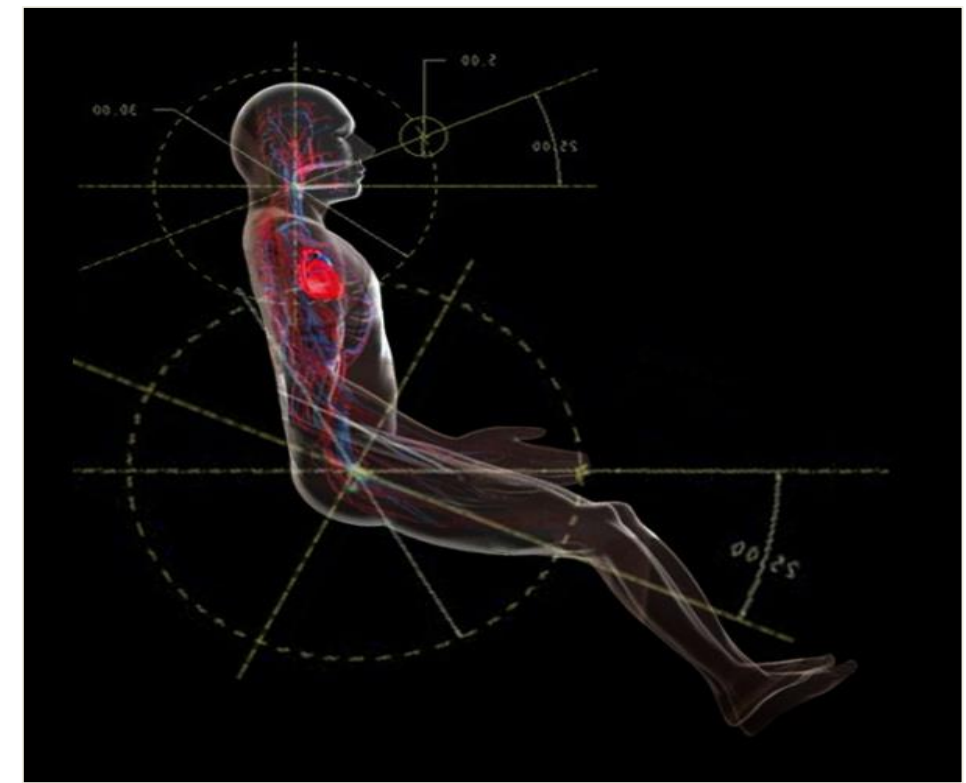




Mesh seat, dual frame embedded assembly design, No nails, No plywood, environmental protection and recyclable, mold foam maintain sitting fatigue-free

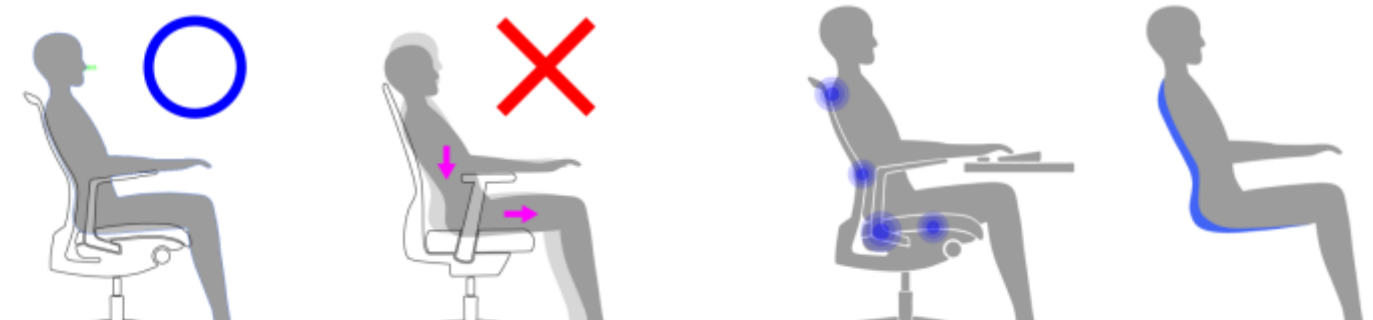
3D adjustable Headrest
3D adjustable armrest (Nylon)
Height adjustable lumbar support





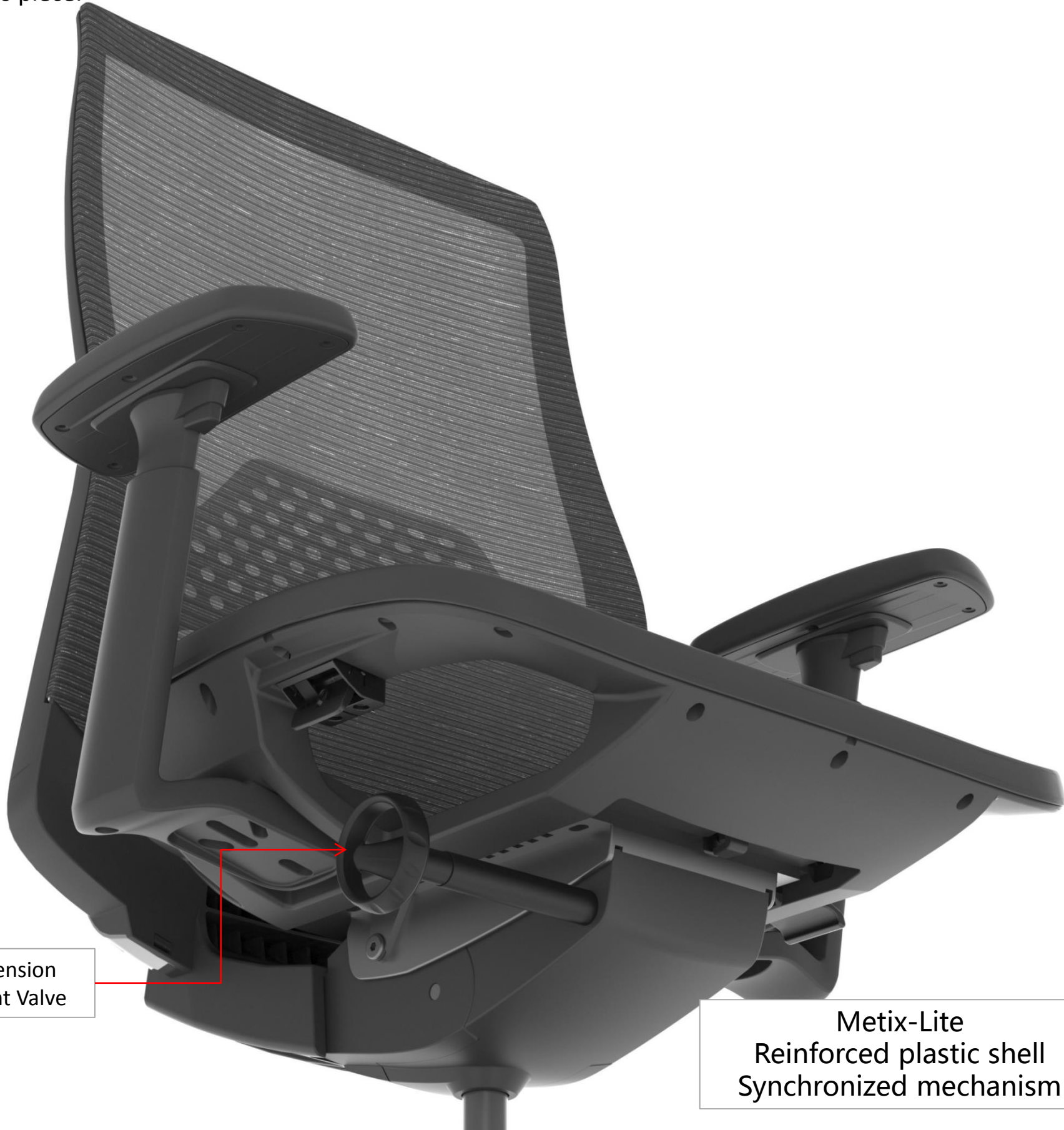
Inspired by zero g-force

Based on scientist finding that the astronauts could fully alleviates feelings of fatigue when the head is slightly tilt and the legs crouch upon by non-gravitational forces. The experiments show that the posture helps the circulation and brings the oxygen back to the brain and the foot easily. The study has been widely applied in the medical facilities, massage chairs and luxury cars. Metix-Lite - performed by the advanced nylon synchronous tilt mechanism and marvelous flexible backrest and the seat, the chair could closely adapt to the curve of body from the back to the hip to help people work in the weightless environment and feel fatigue-free in the work.



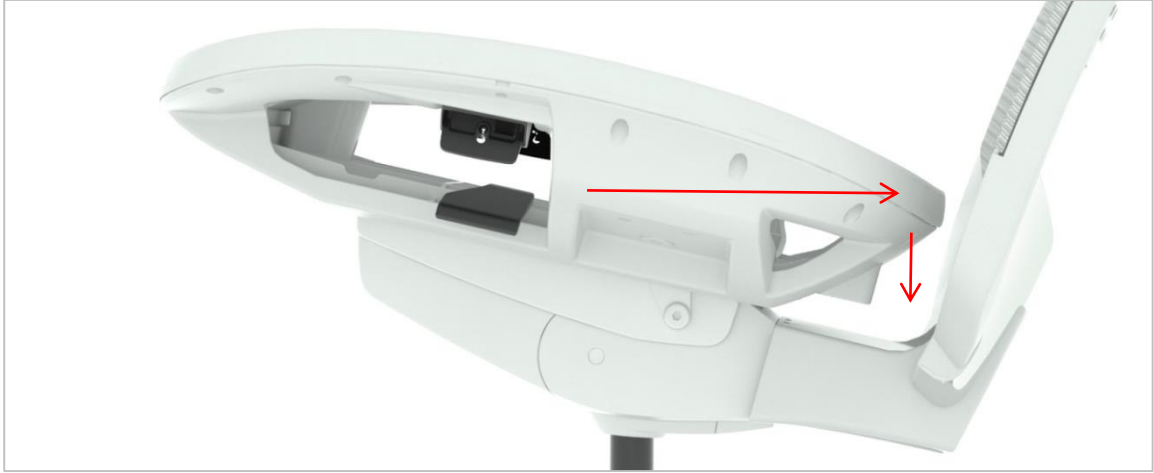
While the ordinary chairs using the existing spares to do the assembly, and leaves the seat and armrest tilt asynchronously or tilting the improper angle. People keeping with long period of constant poor posture on the chair forms the hunchback or results to the cervical spondylosis then brings the painful and affects the quality of life.

The Metix , instead, is a complete tailor-made by following the neutral body posture (NBP).Starting from the core of chair -mechanism, then developing the backrest, seat, armrest and the foot base. Each part is generated from the angles analysis and coined for the Metix in order to accomplish a real perfect ergonomics piece.



Recline Tension Adjustment Valve

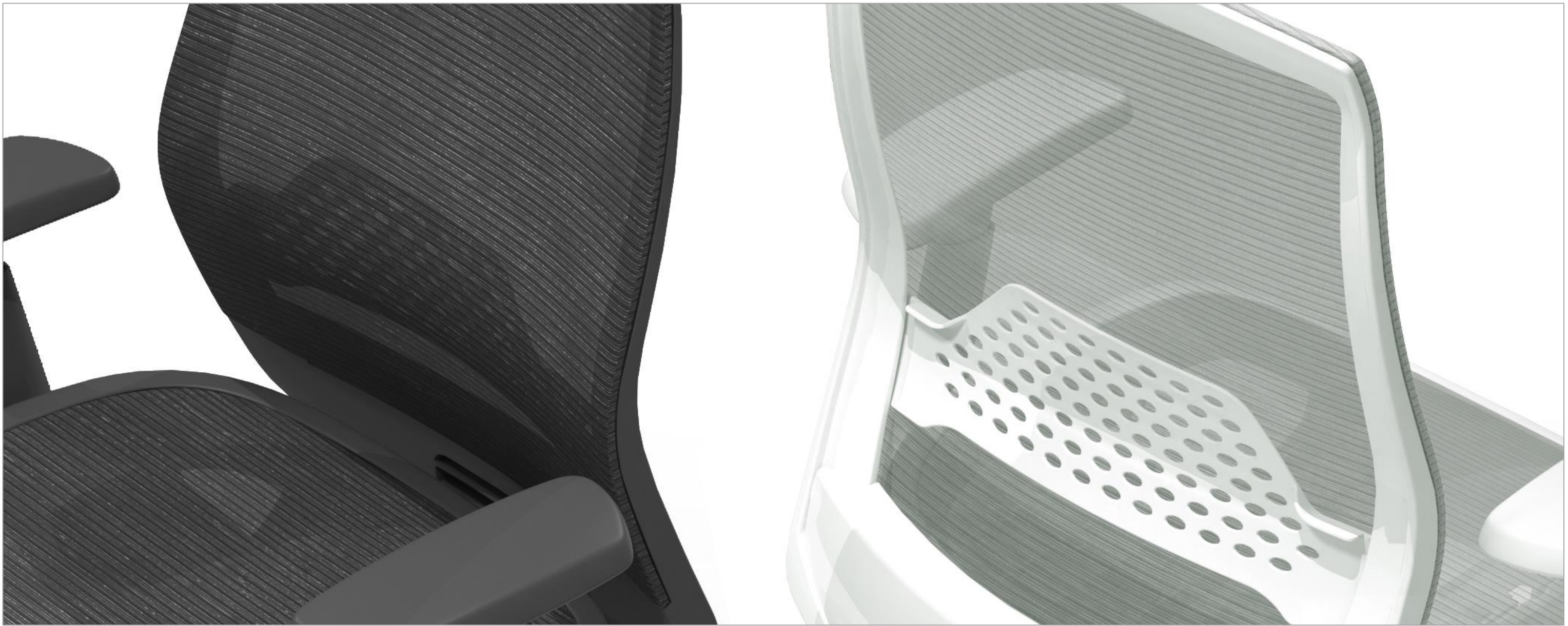
Metix-Lite Reinforced plastic shell Synchronized mechanism



The unique of the Metix is the mechanism with the enhanced synchronously tilting function which makes the seat slightly descending and then move backward while the back is reclining. (the seat movement of the ordinary chair is not easily detected).

The purpose of the design is to make the hips move backward naturally and to keep body sit deeply and neutrally. Meaning the posture does not collapse even over long periods and people is less likely to become tired. .

A new generation Metix-Lite reinforced plastic shell synchronized mechanism Based on original function and comfort, new one more light and environmental friendly. It also greatly reduce the cost and improve the efficiency in the manufacturing.



Specialize mesh for Metix-Lite



MTL-03MKH



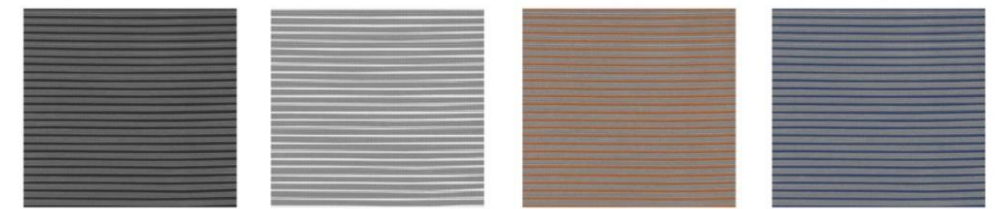
MTL-03MWH



MTL-03MR



MTL-03MB

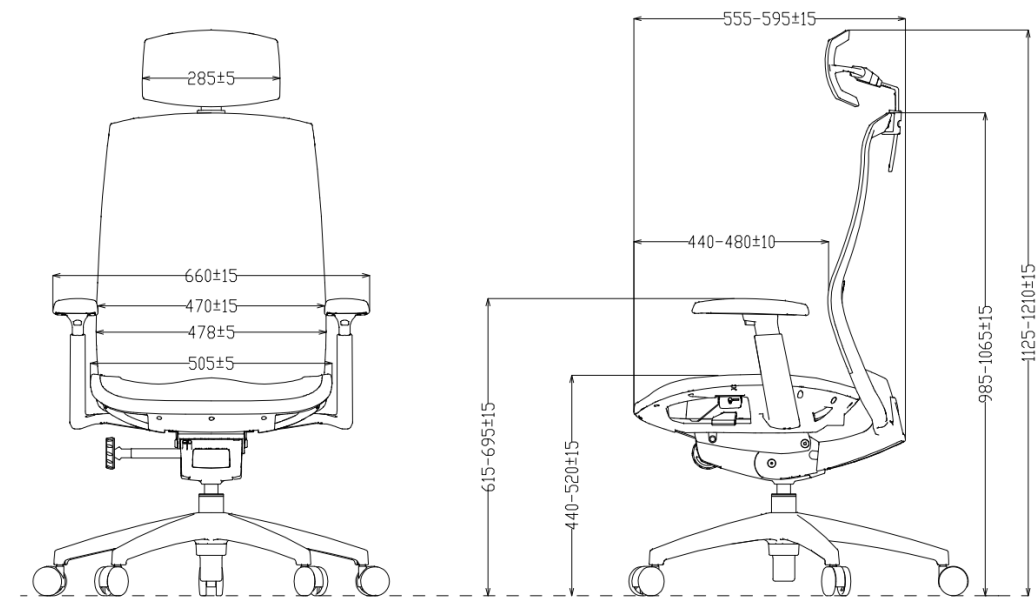


UW-01

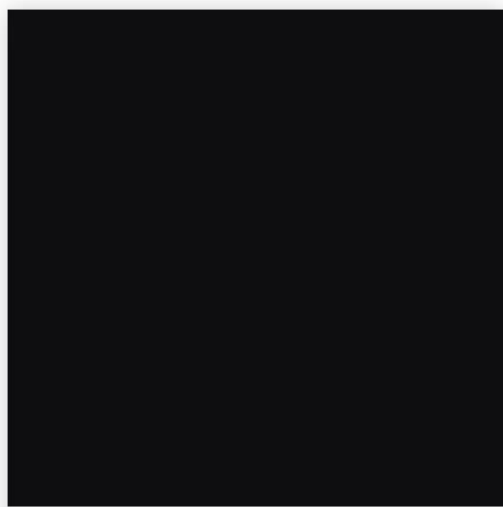
UW-09

UW-07

UW-08



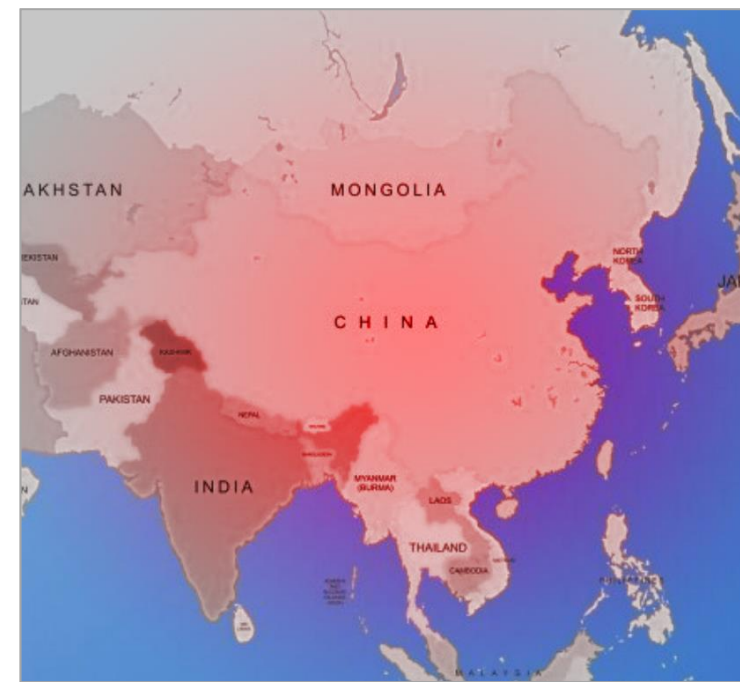
Metix Lite fashion trends colors



RAL
9005
石墨黑 Jet Black



Jet Black



Metix Lite fashion trends colors



RAL
190 93 05
埃及白 Egyptian White



Egyptian White



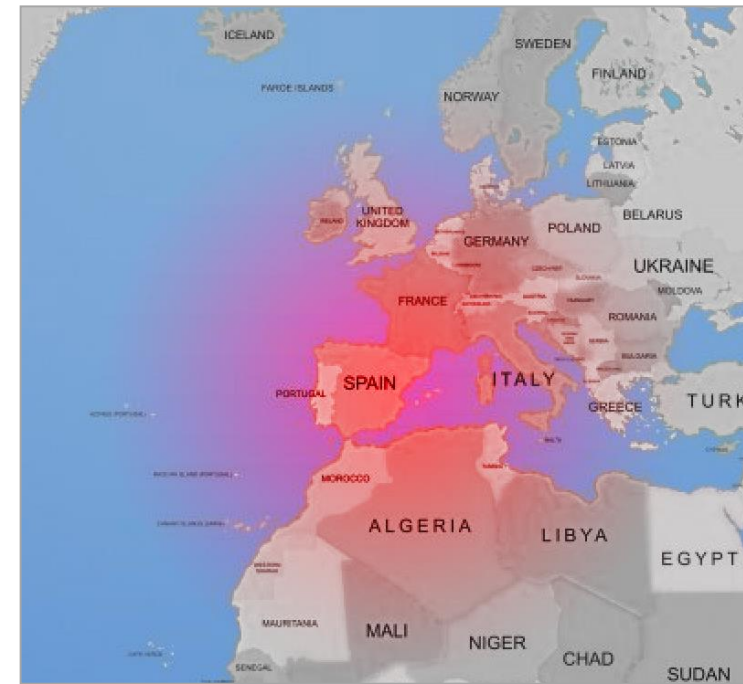
Metix Lite fashion trends colors



RAL
040 40 50
海娜红 Henna Red



Henna Red



Metix Lite fashion trends colors



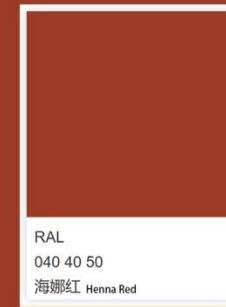
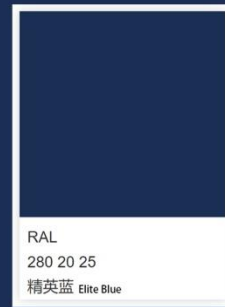
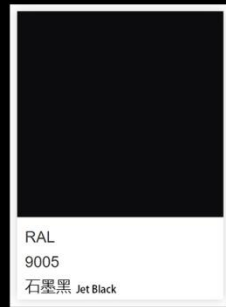
RAL
280 20 25
精英蓝 Elite Blue



Elite Blue







Metix Lite